

KEEPATH

SERVICE CATALOG



Who we are

A Kinetic Exuberant Enterprise, that leads the Path forward!

With our head quarters located in Berlin, Germany and regional offices in Dubai, Cairo, and Abu Dhabi; our geographical footprint is optimized for a close, face to face communication with our clients. Inevitably, delivering our solutions on time and building reliable, sustainable support channels. Generating powerful results based on the experiences of our German engineers, who carry many years of experiences in solution development for various business sectors across the Americas, Africa, Europe, and the Middle-East. Hence, we recognize the culture of your work environment, so no challenge would be unprecedented.

What we are good at

Proactive Risk Mitigation, We don't promise bulky, unreliable or unrealistic solutions; we stick to the facts based on realtime market analysis and extensive research. Building unbreakable bonds with our partners by delivering state of the art solutions meeting our vast cliental portfolio; enabling them to maximize on their internal or external investments.

Our Goal

Empowering humans through technology to increase productivity, reduce non-productive time (NPT), maximizing on IOT, enriching our daily life experiences in industrial and non-industrial applications.

Our Partners



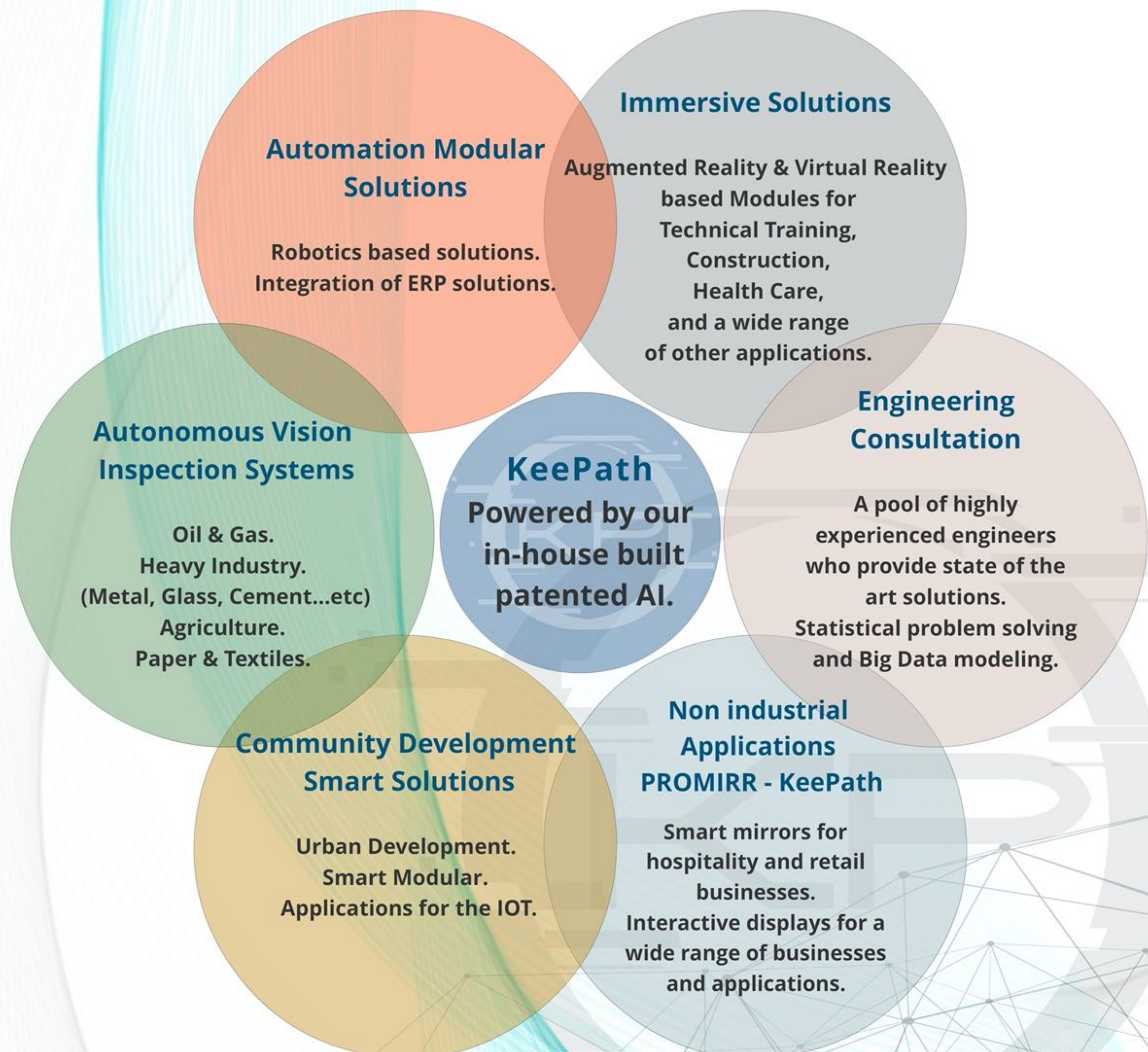
P R O M I R R

Our Philosophy

KeePath was founded on the basis of uplifting each firm we partner with regardless of its field or business sector.

Having a very strong team under one roof, comprised of engineers, system architects and designers who understand the importance of adhering to every single detail of our clients' vision. Consequently, we created several product-lines that will lead the way forward, ensuring an achievable Return On Investment.

Our Range of Products / Solutions

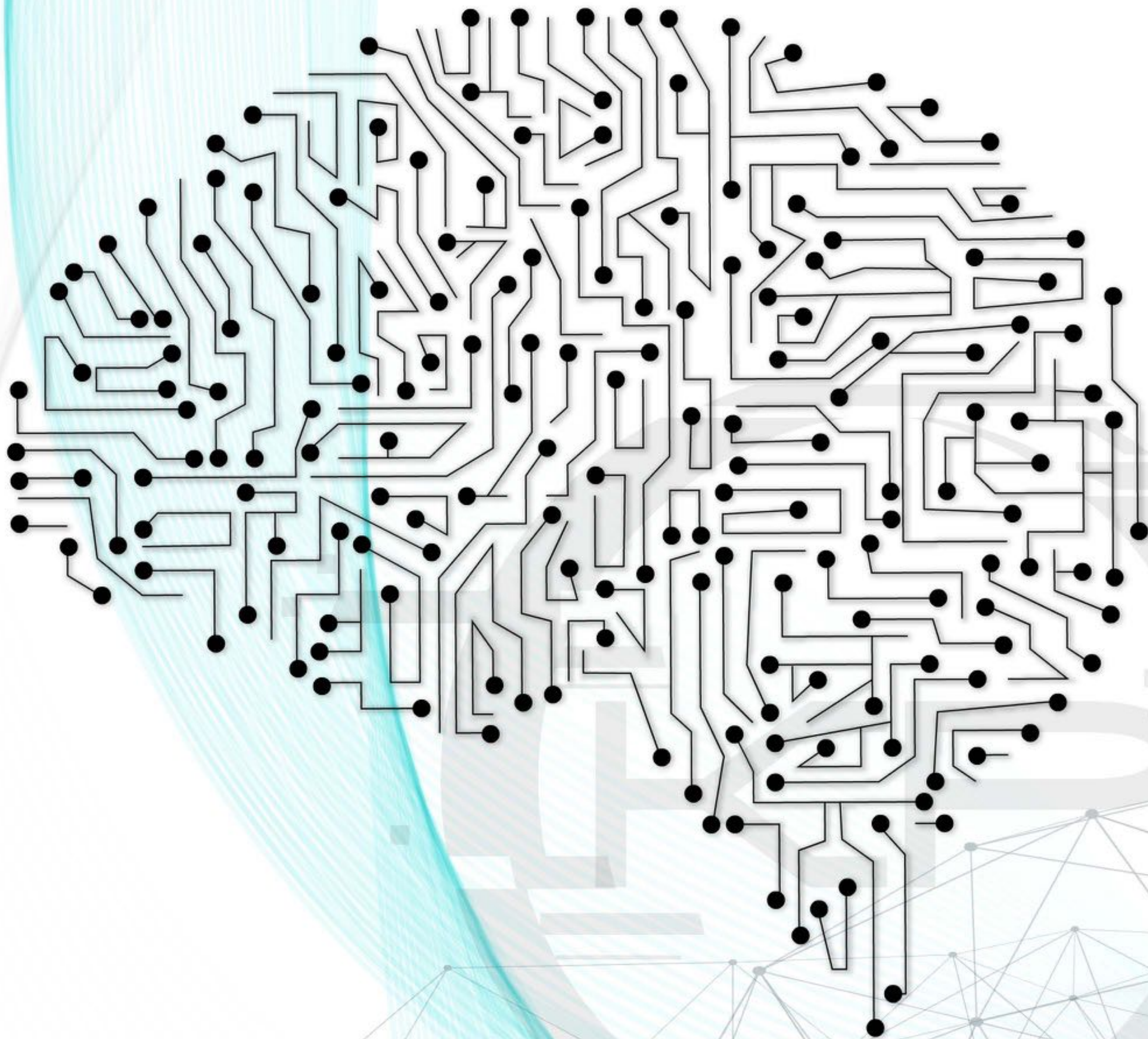


All our solutions are tailored based on our clients' strategy; around their needs.

Artificial Intelligence in Brief

At KeePath we understand and appreciate AI, and this is why we have infused almost everything we work on with at least one or more algorithm, which would significantly reduce any error margin.

Our patented AI algorithms are always built with a flexibility to learn and adapt to the changes made either from external or internal inputs. Consequently, it develops a set of problem solving tactics allowing minimum human interference.



Automation Modular Solutions

Robotics Based Solutions

Our robots are designed in a modular and Intelligent mechanism. These Intelligent Modular Machines (IMMs) are reliable with almost immeasurable downtime, additionally they introduce a higher production rate in relatively shorter production cycles.

Their presence in the logistics sector, has introduced a safer way to work without health endangering situations. In addition, the flexibility of re-programming a present IMM to perform an additional function vs the one it was originally purchased for, creates higher sustainability and continuity levels.

In the case that it is needed, our IMMs could predict failures and trigger maintenance process autonomously, should an outside anomaly occurs prior scheduled maintenance cycle.



Integration of ERP Solutions

Juggling two or more systems in a given enterprise, between its back-end and front-end solutions, sometimes lead to inaccuracies based on human errors. Based on this, we have created middle-channel solutions (S.W. / H.W.) to combine those entities under one umbrella; creating an environment where the user can optimize the complete operations cycle without the need to re-enter data in a separate, stand-alone system.

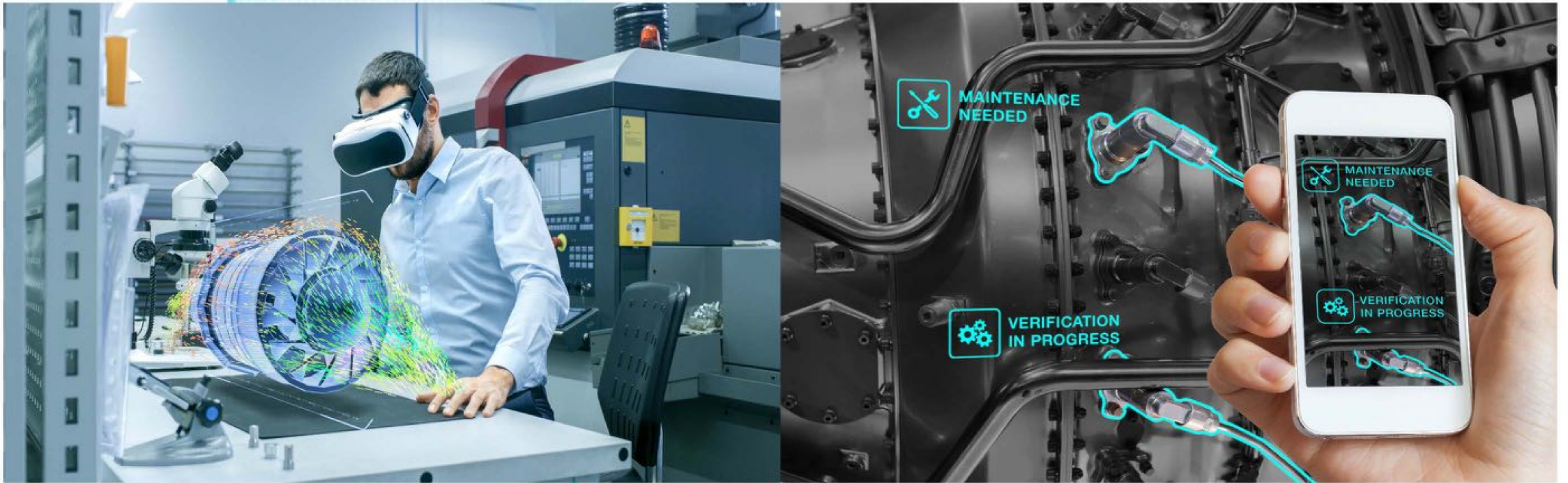


Immersive Solutions

Augmented and Virtual Reality Applications

Real-time interactive graphics with three-dimensional models, combined with a display technology that gives its users the immersion in the model world, and direct manipulation.

Virtual and augmented reality produce a set of data which is then used to develop new models, training methods, communication and interaction. In many ways, the possibilities are endless.



At KP we have realized this technology as the new game changer of how we perceive information, and how easy it is to manipulate alternate realities. From the design phase to building each block of information and how it is presented through our looking-glass, every detail is always matched with a real life scenario.

Virtual Reality

This full immersion experience is not only adding to one's bank of knowledge, but it can also save lives! We have delivered several types of immersion projects, where we have helped engineers build their turbines and test its functionality in a hazardous free environment, created real-life construction sites for better understanding of how the house will look like in reality. Moreover, helped health care doctors attend to patients in a distant geographical area in a real-life virtual clinic without physically being present.



Augmented Reality

Many have thought that both technologies are simply the same, with just a different representation. Although they both can deliver the same content of a given environment, yet they convey different messages. For example; we can use VR to simulate and train personnel on maintaining a specific machine, which is located in a hazardous environment without any risk to their health. Whilst, and for the same example, AR will operate in a real life environment adding a new dimension with hands on experience following specific guidelines and regulations!



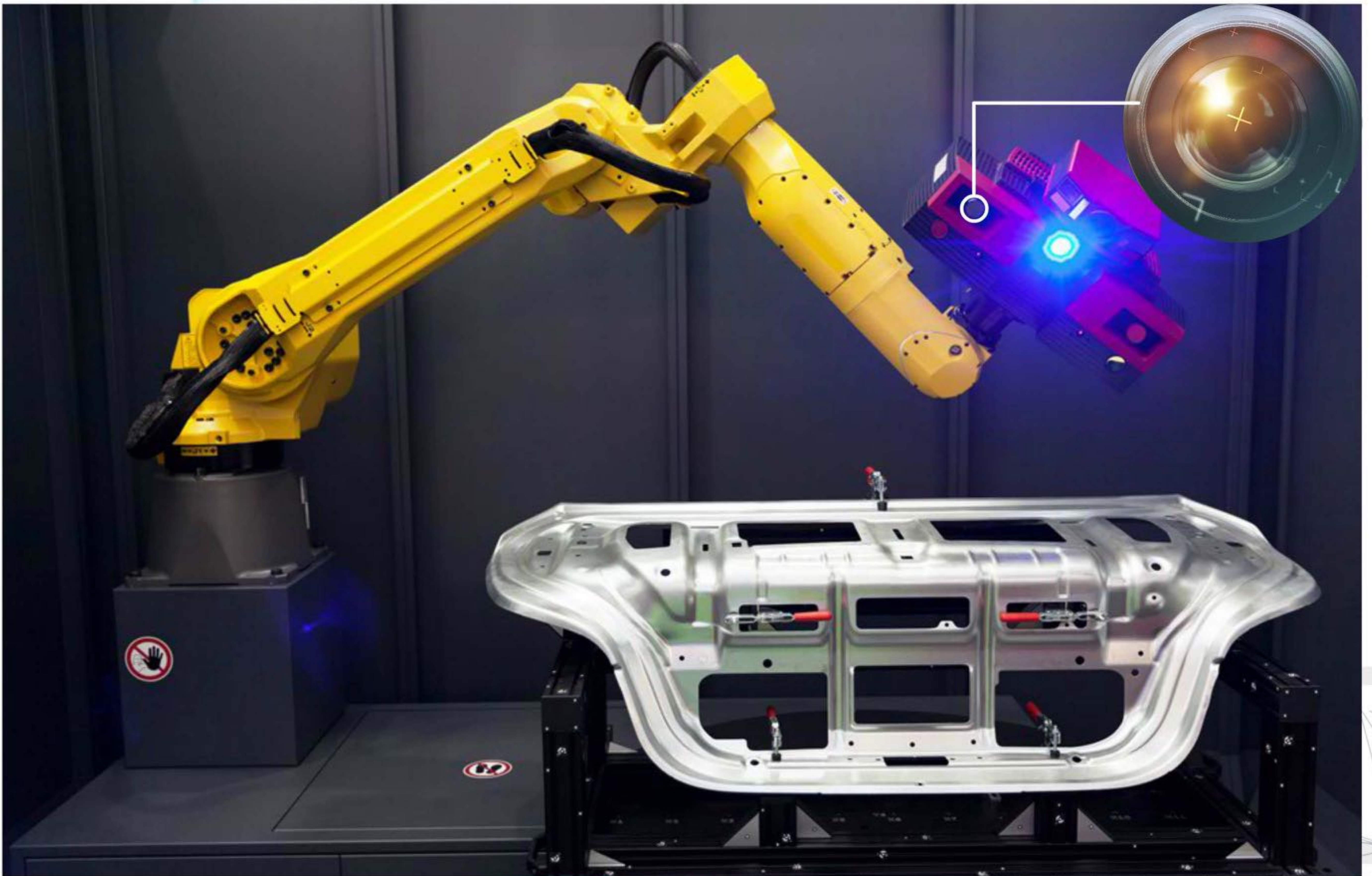
Successfully delivered our tailored solutions to the following sectors:

Technical Training for Industrial Engineers, Technicians, Operators, etc.
Exhibitions / Education (Schools & Universities) / Health Care / Entertainment / Advertisement.

Autonomous Vision Inspection System

Expanding on our best-in-class technology and methods, we have developed several single and bundle services, providing image based automatic inspection/analysis, integrated with automatic inspection, process control and robot guidance within the industrial applications.

Our systems, both software and hardware cover a wide range of performance and price points requirements. We offer products and solutions, which range from smart cameras to full vision systems, embedded with in-line scanners for 2D and 3D high speed measurements.

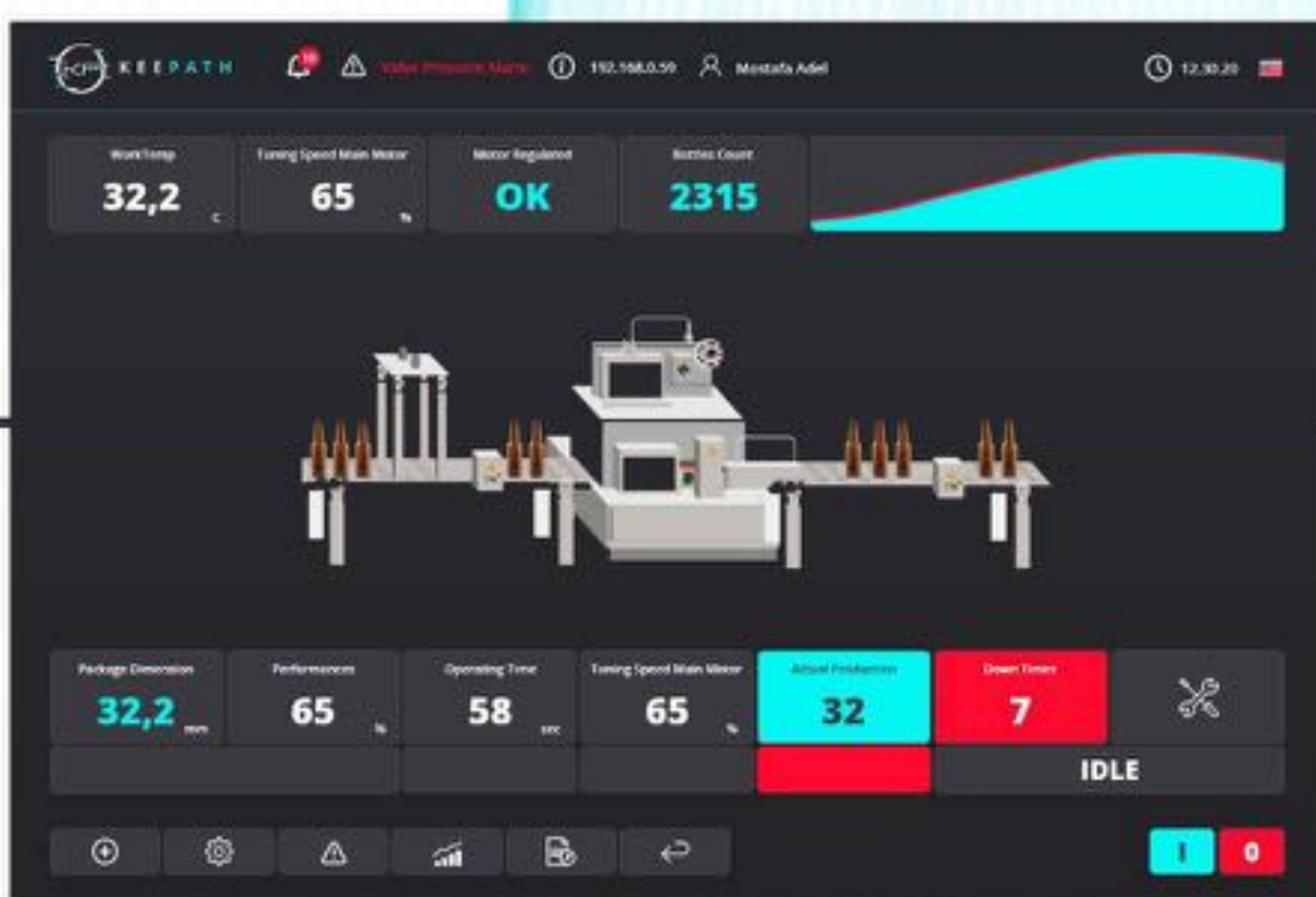


In-line scanners combined with Camera based Inspection system automated via a robotic arm.

One of our Latest projects

Our client in Lower Saxony, Germany who produces several types of beverages, and several types of glass bottles. They had millimeter sized pitfalls in their production cycle, specifically regarding the quality of their glass products, which required an efficient automatic inspection system for both process and quality control.

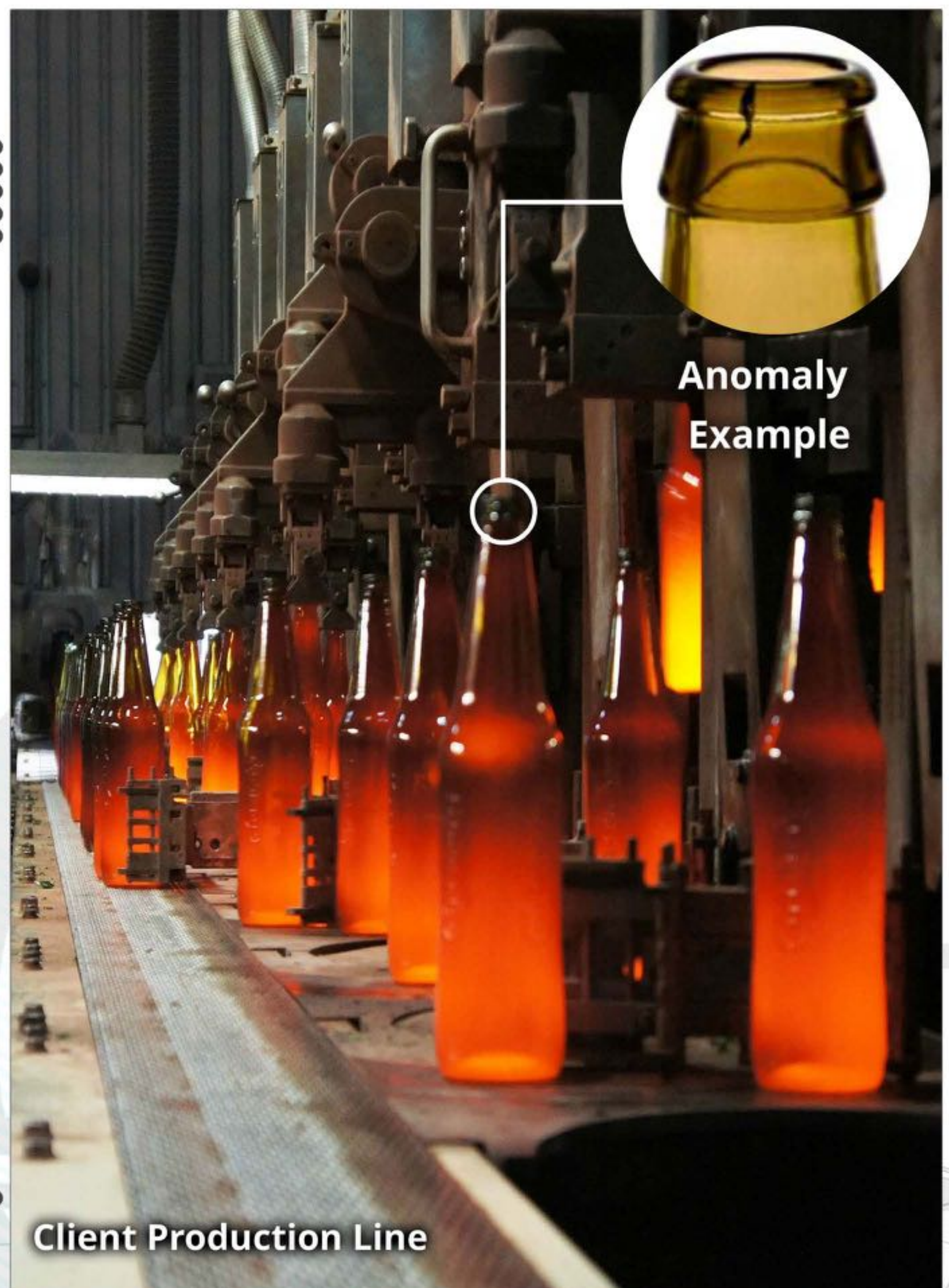
KP evaluated the full production mission to engineer the optimum system configuration needed. Accordingly, we have built a smart system consisting of two cameras that scan glass bottles for defects / anomalies at a sub-millimeter accuracy; analyzing those defects in early stages, retains a lower trend in defects within a millimeter scale. Additionally, this solution was performing at the client's maximum production capacity of 1200 bottles per minute.



KP Autonomous Vision System



Analysis Quality Control and process Feedback

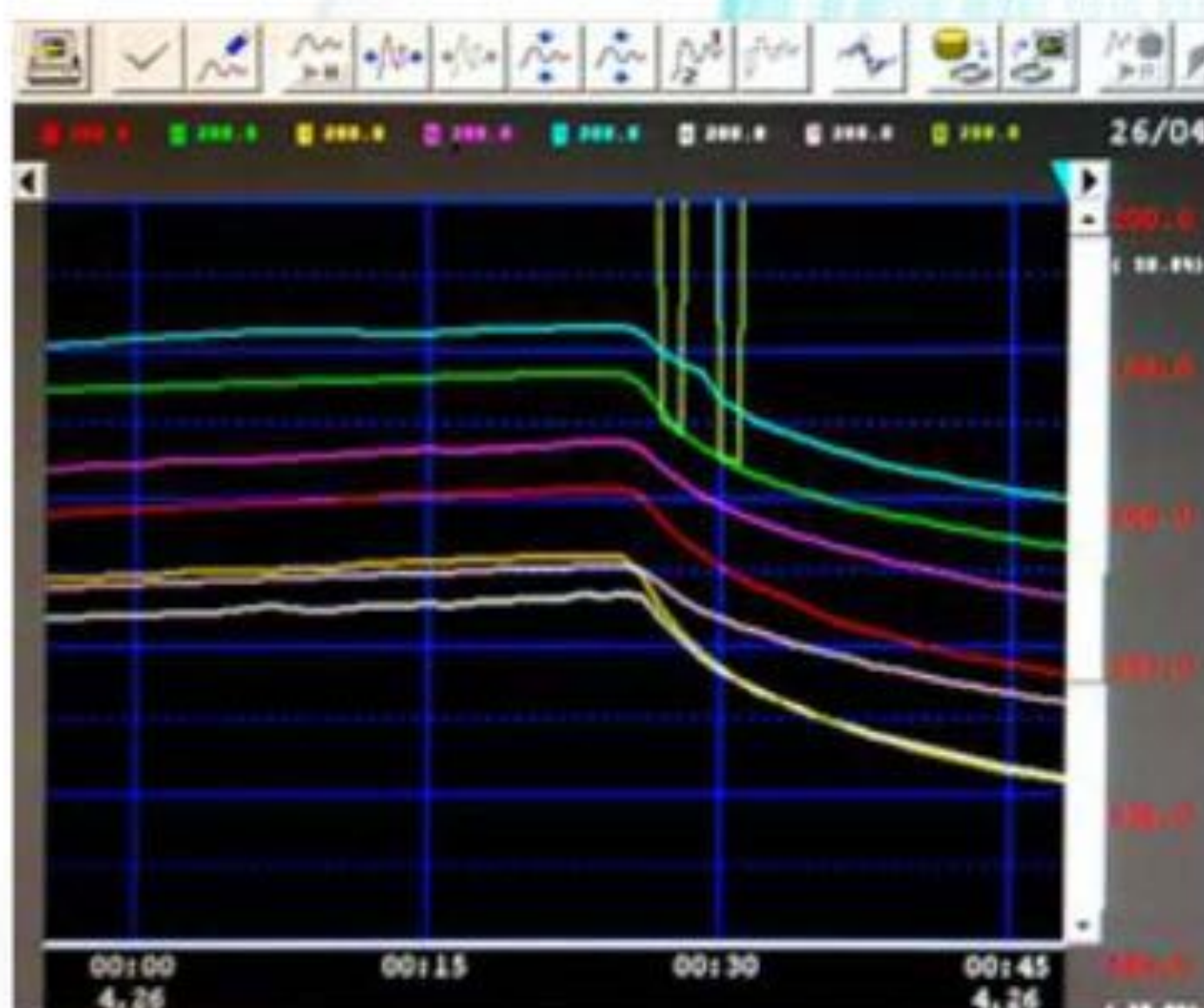


Our systems are lean and remotely accessible for ease of use and distant communication and control.

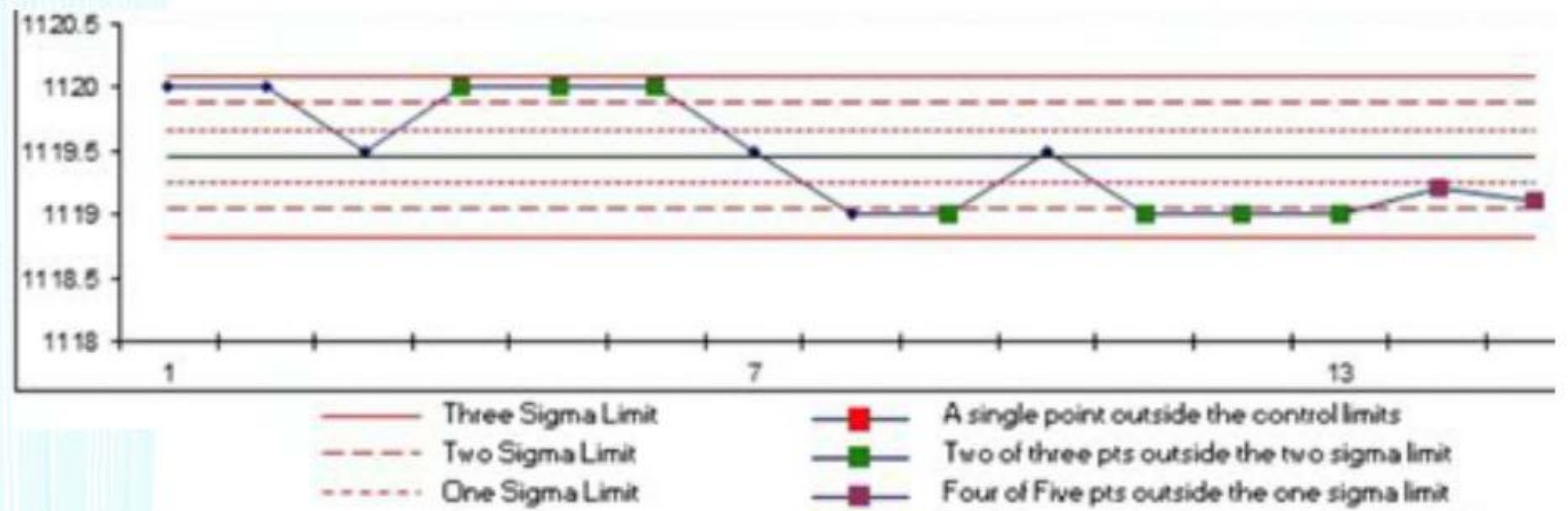
Engineering Consultation

Live SPC

Tackle all your challenges in advance before issues arise using Real-time Statistical Process Control (SPC). Utilizing a modular software platform, we can deduce multiple solutions, which have the following capabilities: Data collection and integration, real-time monitoring and analysis, advanced reporting suite.



Typical DCS page with Process Parameters Trend

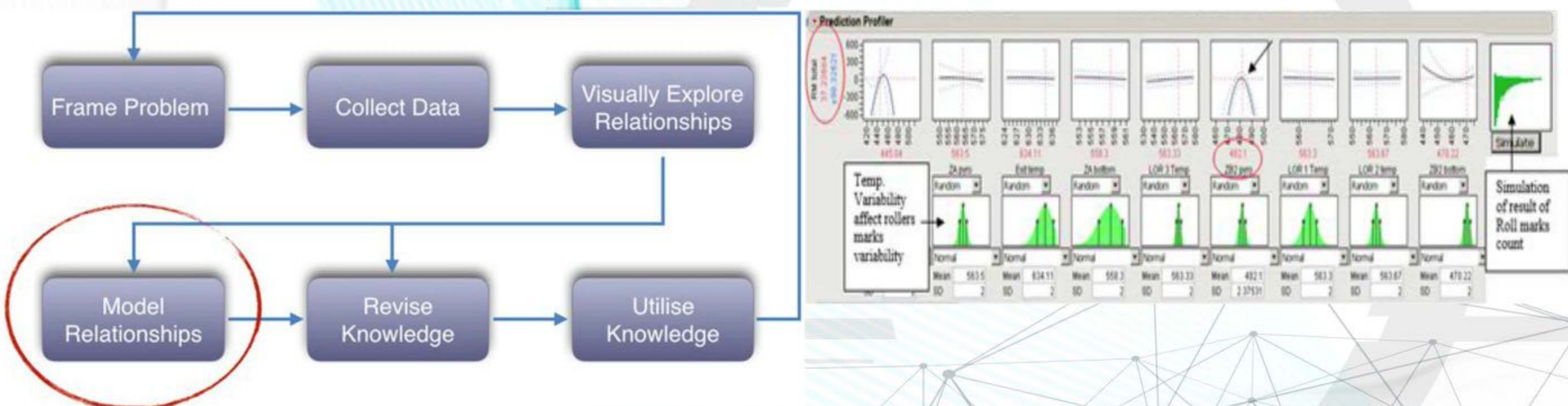


Process Parameters Control Chart with Real-Time Statistical Advice

Statistical problem solving and big data modeling

If your goal is description, prediction, or explanation, you will appreciate the statistical discovery paradigm of our services; this exploits the intrinsic synergy between visualization and modeling.

Our team of statistical analysis experts in collaboration with worldwide known firms utilize state of the art data management software, such as JMP, which provides insights, foresight and the means of continues improvements. Additionally we can compare and contrast models built using different approaches, and generate code in C, Python, JavaScript, or SAS.



Solve problems, reveal opportunities and make informative decisions in the face of uncertainty!

Community Development Smart Solutions

The future of urban development is defined by the agility of its infrastructure. Its transformation into a smart city, area, or a zone is constructed on the foundation and concepts of the Internet Of Things (IOT) at its finest contribution to our quality of life; starting from finding a parking slot, optimizing resources to preserving lives.

Building on our core technologies and case histories of utilizing smart cameras, sensors and cable infrastructure to uplift the performance of different types of industries, and saving lives. This inspired us to develop a portfolio of smart solutions, specifically designed to serve as the foundation for Urban development.

Such technologies have the ability to autonomously manage traffic flow for clearing ambulance passage, as well as controlling pollution and noise, irrigation for water management, all the way to waste control and management. Those examples of such technology applications do not only significantly impact the digital life factor, but also contribute to every other aspect of our well-being.



Our philosophy embraces agile modularity, evolving around the building blocks of information and processes; connecting nodes leads the way to a prosperous and a sustainable economy / society.

Non industrial applications - PROMIRR - KeePath

Interactive touchscreens revolutionize our lives with their ability to simplify navigation and share information instantly, it became our new era intuition. PROMIRR offers complete interactive tailor-made solutions for hospitality and retail businesses. enable in new ways of exceptionally enjoyable human interactive experiences to inspire and keep engaging clients with a specific brand and services.

SMART MIRRORS Specifically designed for hospitality and retail businesses.

Whether a millennial or from another generation, modern clients have high expect top-brands to implement high-end technologies !

Amaze clients with unique features and services while helping them throughout their experiences with the brand and its services. We work to inspire and Influence guests and shoppers with ultimate attractiveness, tailored interactive contents and stunning visuals, to march into the next level of the internet of things (IOT) transformation.



PROMIRR

INTERACTIVE DISPLAYS & KIOSKS specifically designed for modern and luxury retail business.

Connecting with customers inside and outside a store, positively influence and drive their behavior! When it comes to behavior driving, engaging content is the king. Engaging content is making the sales experience enjoyable, which is a sure way in attracting customers around a given brand.

This is our starting point; working from the inside-out directly on brand content, concept and aesthetic to create tailored visually appealing, and engaging interactive smart displays.



INTERACTIVE TABLES specifically designed for F&B retail business.

Growing comfort with technology is driving several business trends, and the F&B retail business is no exception.

We have a vision to enhance F&B operation and engage clients with a given brand, granting them a unique experience. Our team work directly with our clients to assist them in their venture, making it more efficient and successful. This certainty redefines the future norms of using this innovative technology to the clients' advantage. Our inspiring designs are distinguished by simplicity and creating enjoyable moments of interaction.

Prepare for a future of new digital services and experiences ... create exceptional moments!

*For your own unique path forward,
please contact us on the following*

+ 20 100 610 4014
+ 971 55 765 9905
+ 49 157 7846 7264

www.KeePath.com
info@KeePath.com

